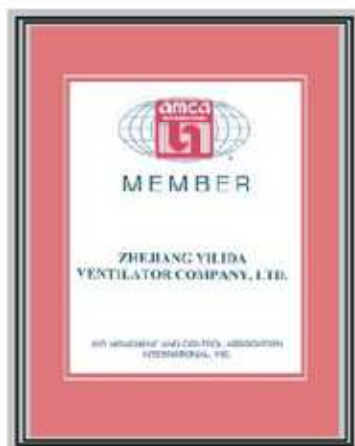


SYH 系列离心式空调风机

CENTRIFUGAL VENTILATORS



Zhejiang Yilida Ventilator Co., LTD. certifies that the SYH Centrifugal Ventilators shown herein are licensed to bear the AMCA Seal. The ratings shown are based on tests and procedures performed in accordance with AMCA Publication 211 and AMCA Publication 311 and comply with the requirements of the AMCA Certified Ratings Program.

All of the Centrifugal Ventilators described herein are licensed to bear the AMCA Seal, and their certified ratings are shown on pages 91 through 102.

浙江亿利达风机有限公司对下图所示的 SYH 系列离心风机进行了AMCA认证, 并取得了印章。样本中的所有数据都基于 AMCA 的性能测试, 性能测试符合 AMCA 211和AMCA 311 文件, 完全按照AMCA认证程序的要求进行。

这里描述的所有离心风机都已经取得了 AMCA 印章, 它们的认证数据见第91-102页。





概述

SYH系列后向离心式空调风机，叶轮采用后向机翼型叶片，具有通用性强、效率高、噪声低、耗能少，安全性好等特点。是各类中央空调机组及其它暖通空调、净化、通风等设备理想的配套产品。该样本中列出的12种规格风机，流量范围从2000m³/h-120000m³/h，均通过了美国AMCA产品认证，并取得了AMCA印章。

Outline

The SYH series of centrifugal fans with backward airfoil blade, are wide range of applications, high efficiency, low noise, and low power consumption. They are used in HVAC system, and purifiers system. They are also suitable for use in a number of other ventilator applications. The SYH Series includes 12 models as described in this brochure. The volume flow ranges of the SYH series varies from 2,000 cubic meters per hour to 120,000 cubic meters per hour. They are licensed to bear the AMCA Seal.

命名方式

SYH系列风机命名方式由风机系列代号、叶轮名义直径、结构型式组成：

SYH 500 R

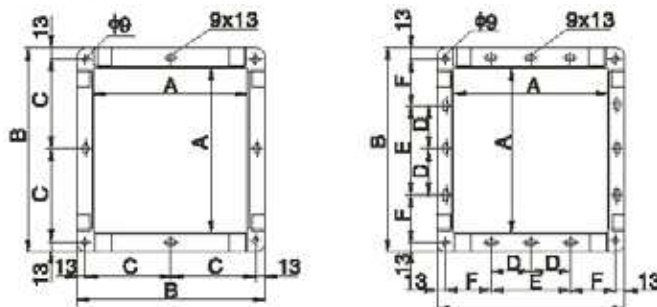


Designation of Products

The model designations signify the nominal impeller outside diameters:

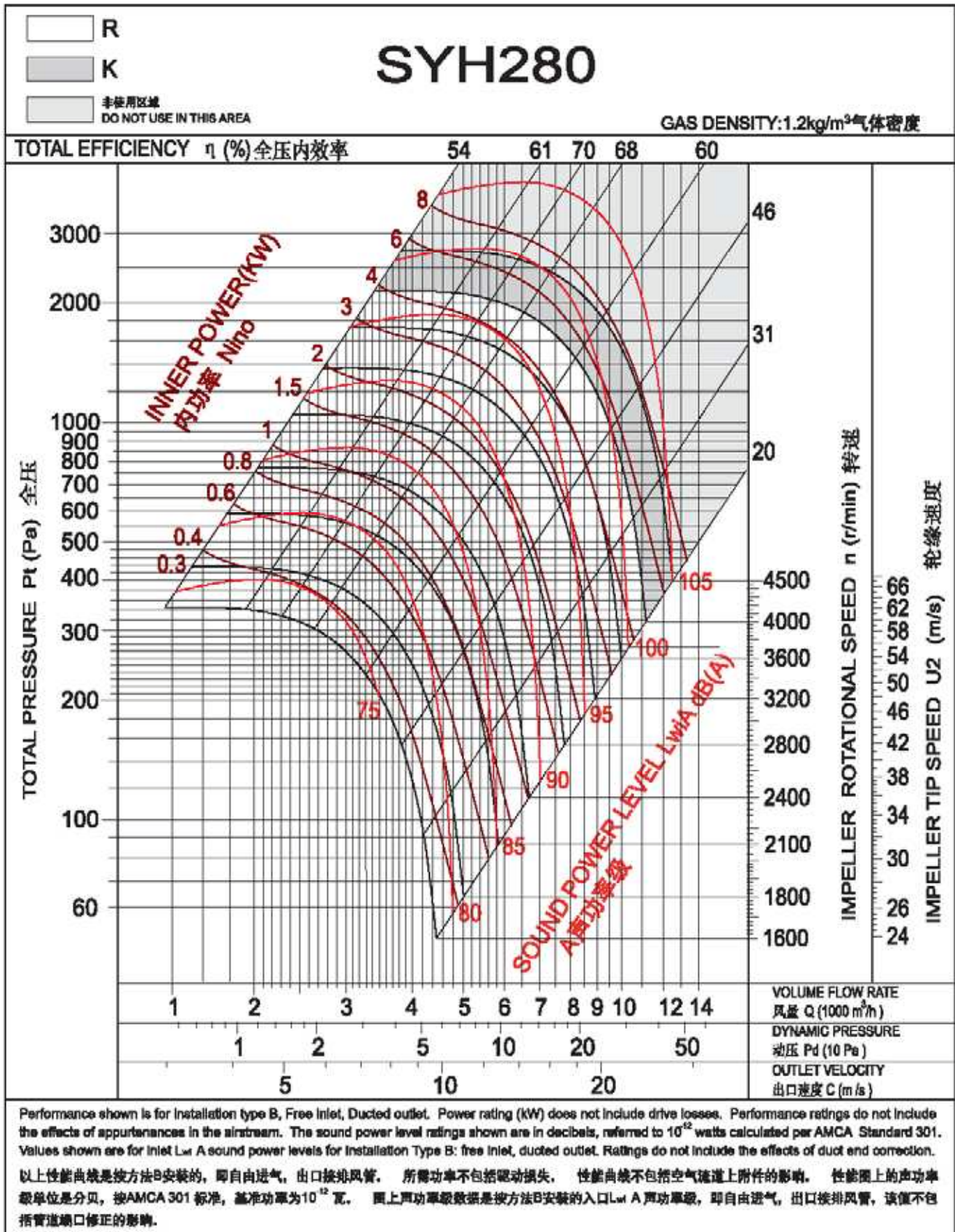
- 结构型式 Construction type
- R型(基本型) Type R (Basic model)
- K型(加强型) Type K (Enhanced model)
- Z型(超重型) Type Z (Heavy duty)
- 叶轮名义直径(mm) Nominal diameter of impeller (mm)
- 后向机翼型离心风机系列代号 series ventilator with backward airfoil blades

出口法兰 (Outlet Flange)

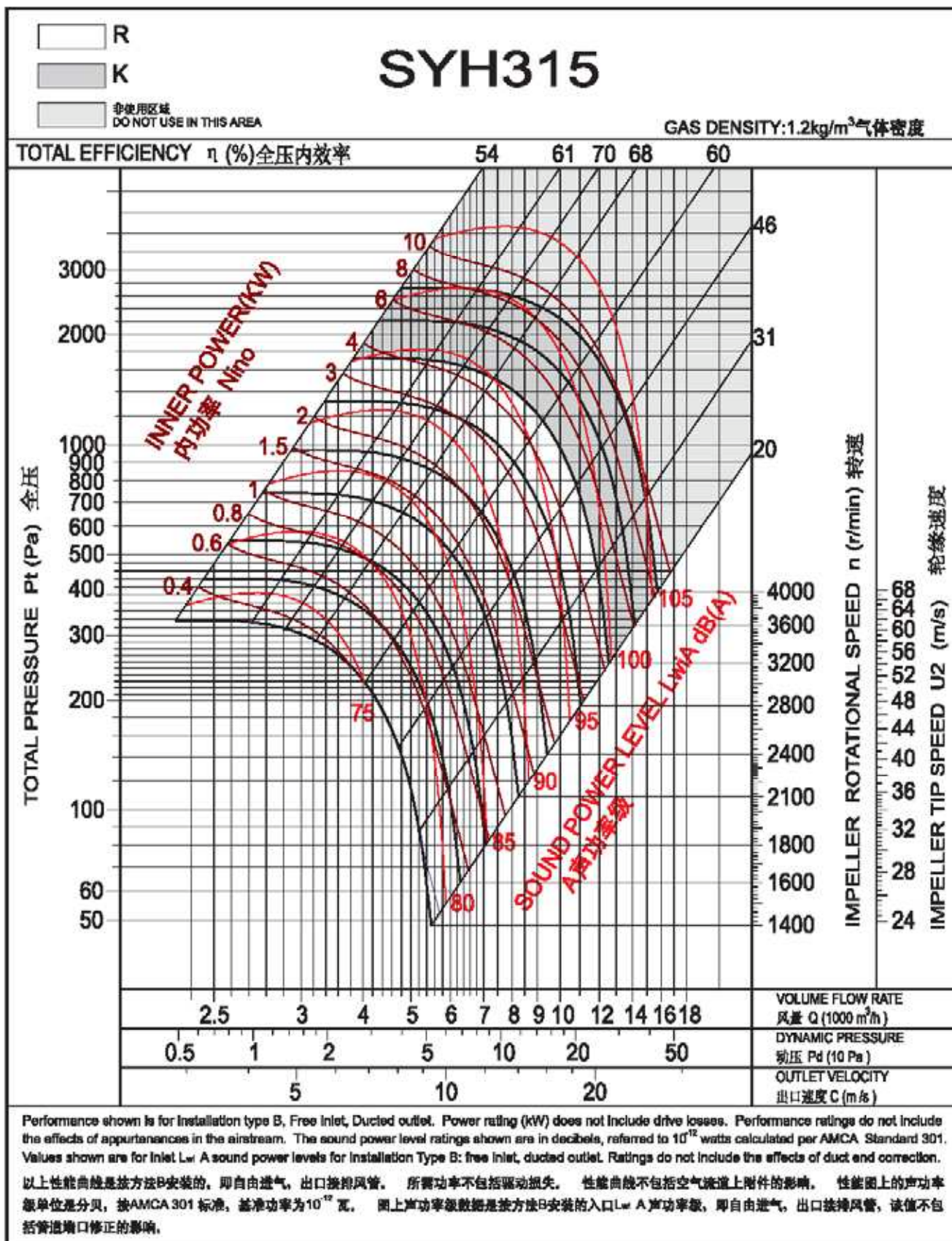


型号Type	280	315	355	400	450	500	560	630	710	800	900	1000
A	361	404	453	507	569	638	715	801	898	1007	1130	1267
B	417	460	509	563	625	694	771	857	954	1063	1186	1323
C	195.5	217	241.5	-	-	-	-	-	-	-	-	-
D	-	-	-	-	-	-	-	-	200	250	300	350
E	-	-	-	200	200	250	250	300	400	500	600	700
F	-	-	-	168.5	199.5	209	207.5	265.5	284	288.5	280	298.5

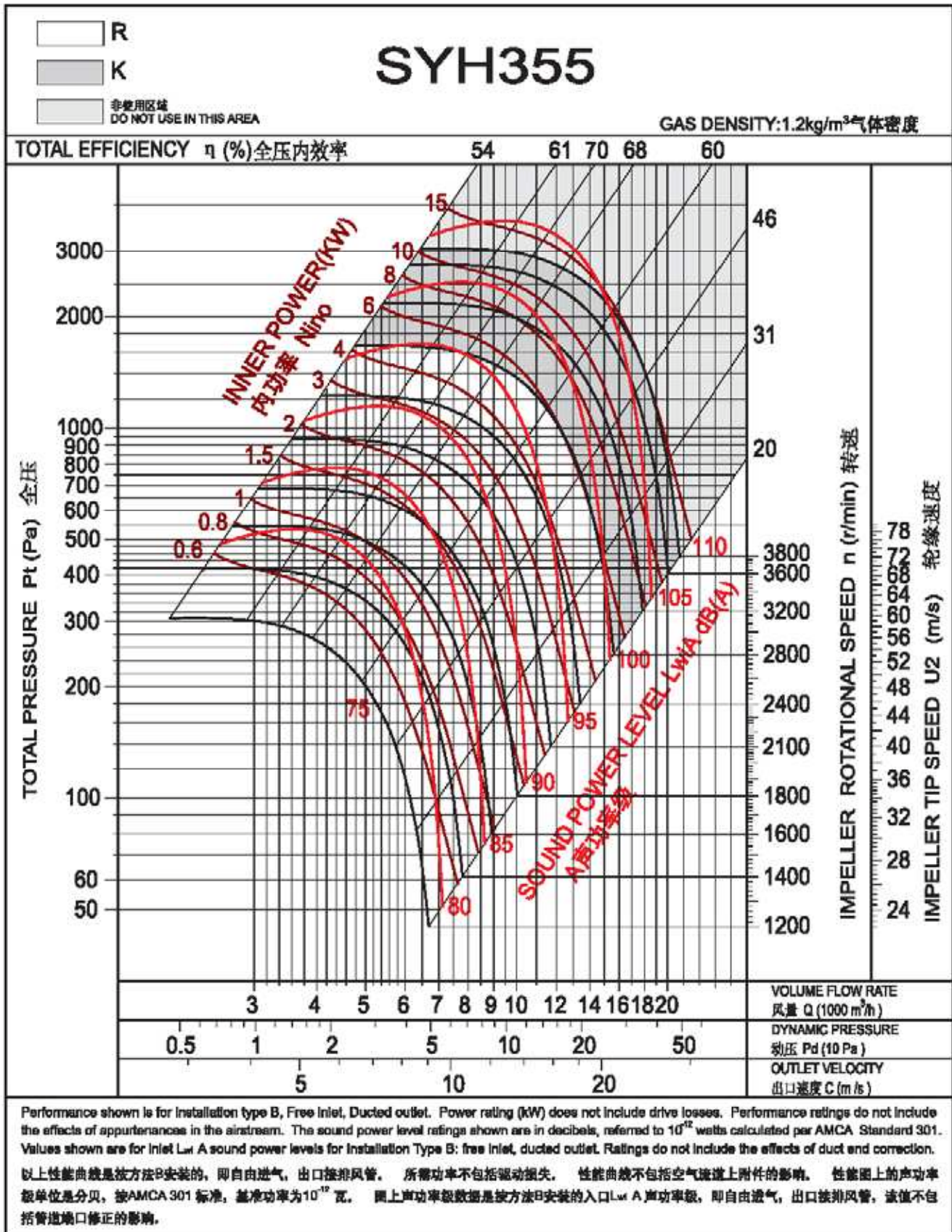
图2 (Fig 2)



SYH



SYH



VOLUME FLOW RATE
 风量 Q (1000 m³/h)

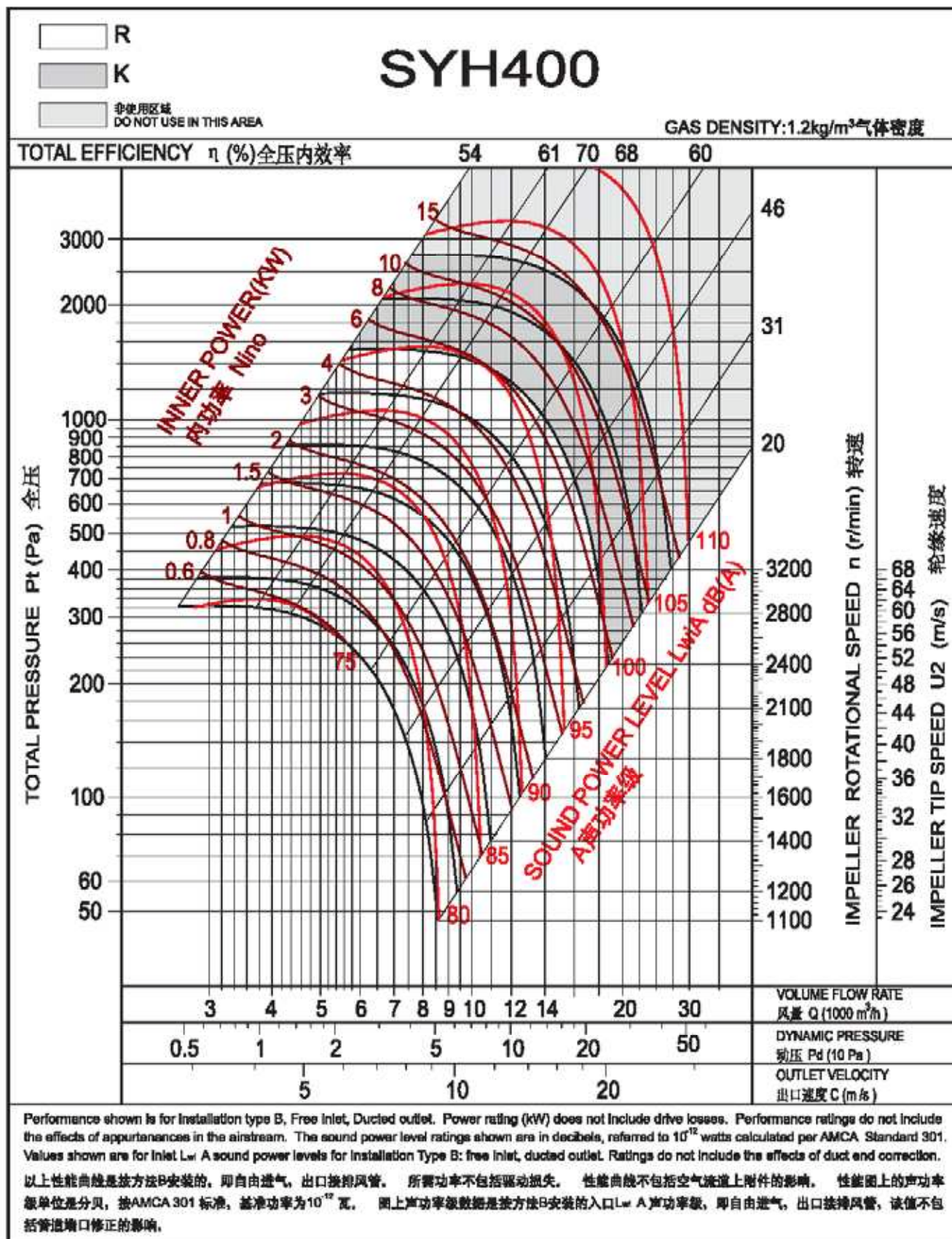
DYNAMIC PRESSURE
 动压 Pd (10 Pa)

OUTLET VELOCITY
 出口速度 C (m/s)

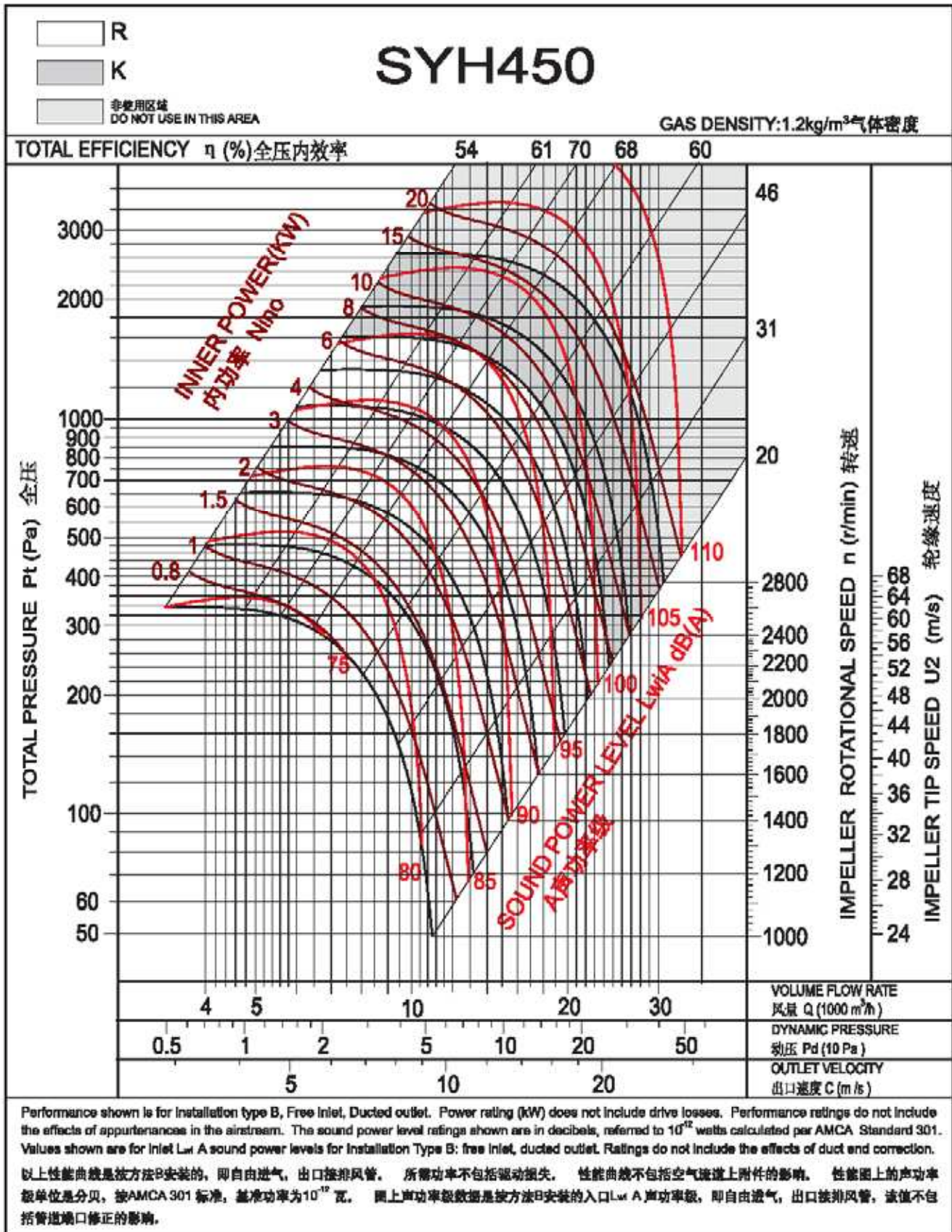
IMPELLER ROTATIONAL SPEED n (r/min) 转速

IMPELLER TIP SPEED U2 (m/s) 轮缘速度

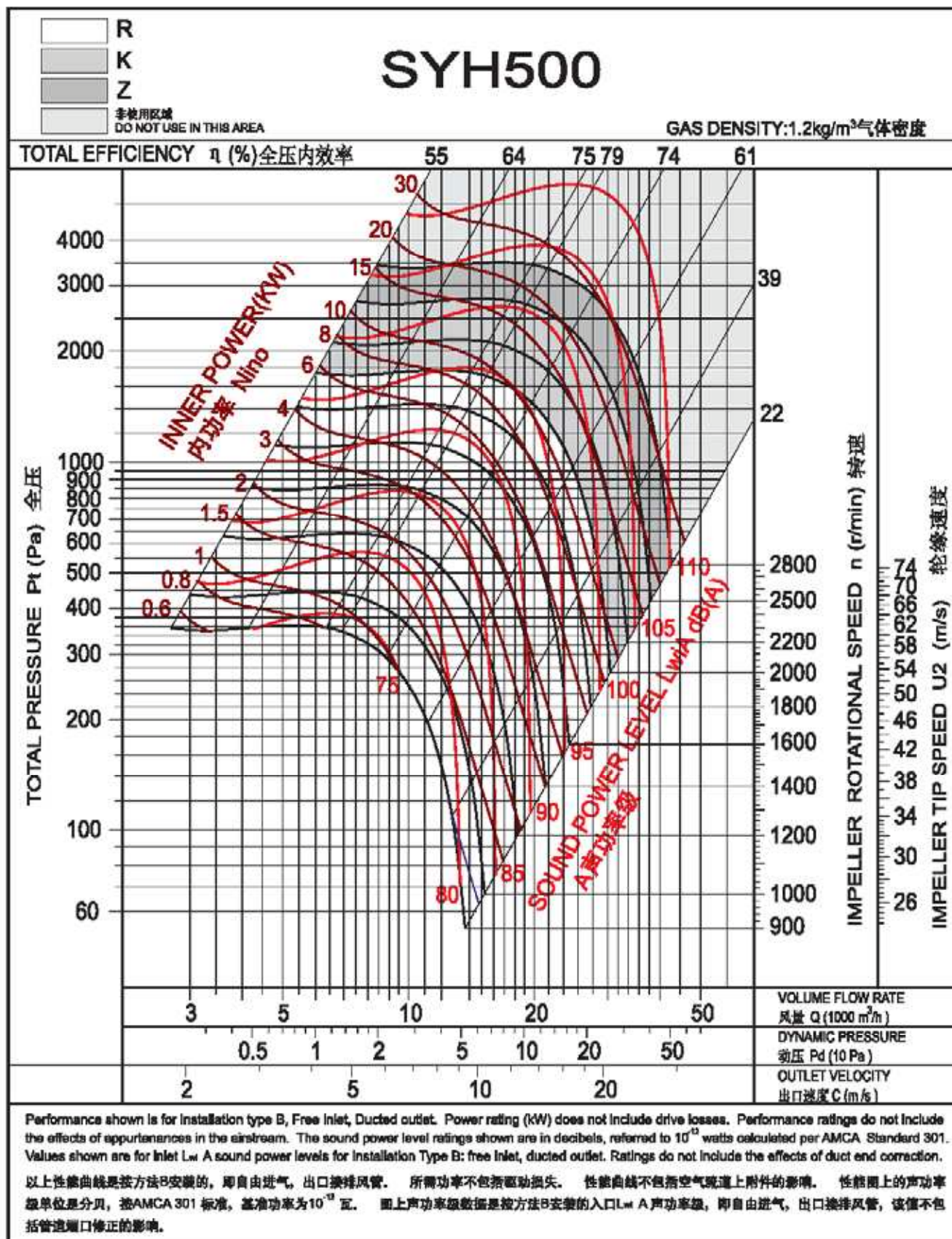
SYH



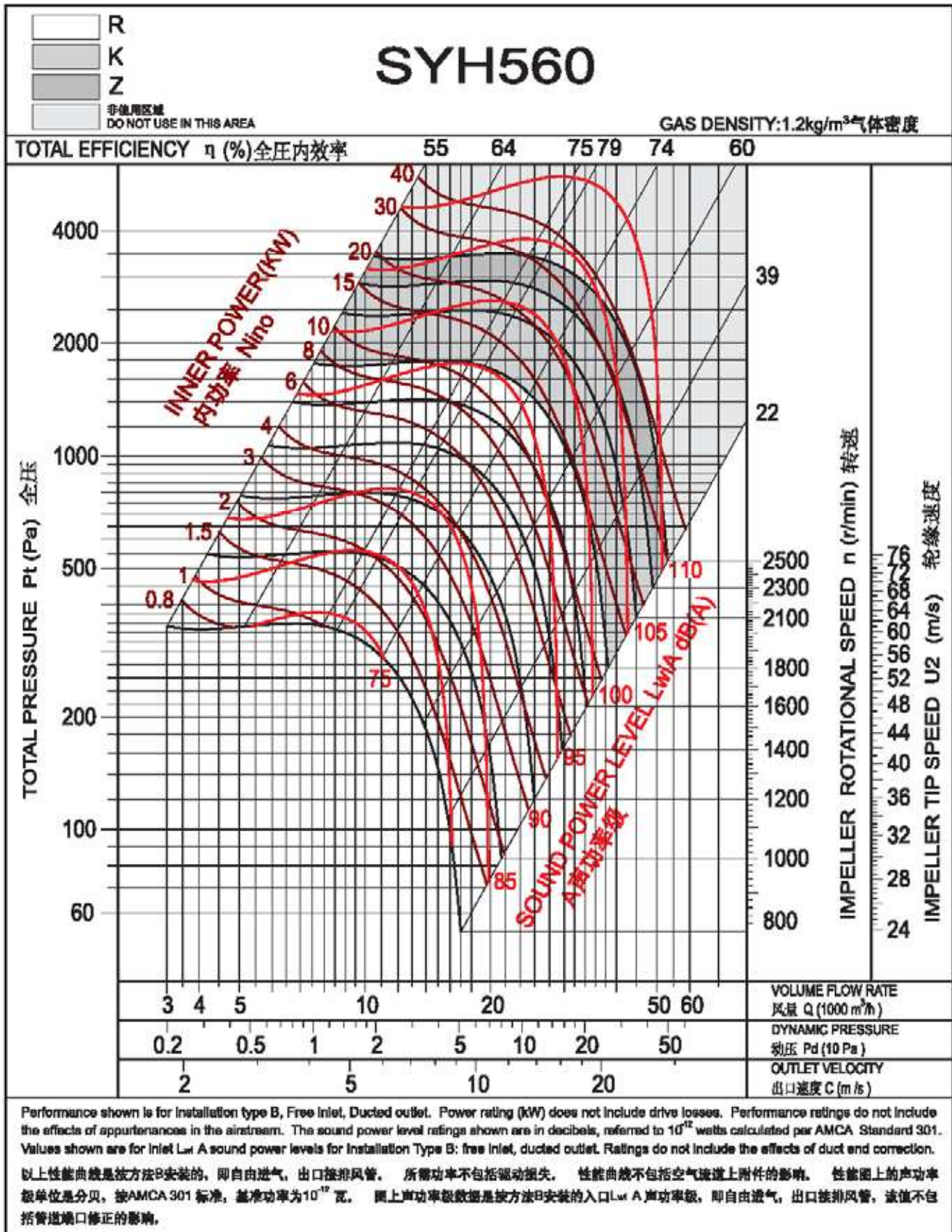
SYH

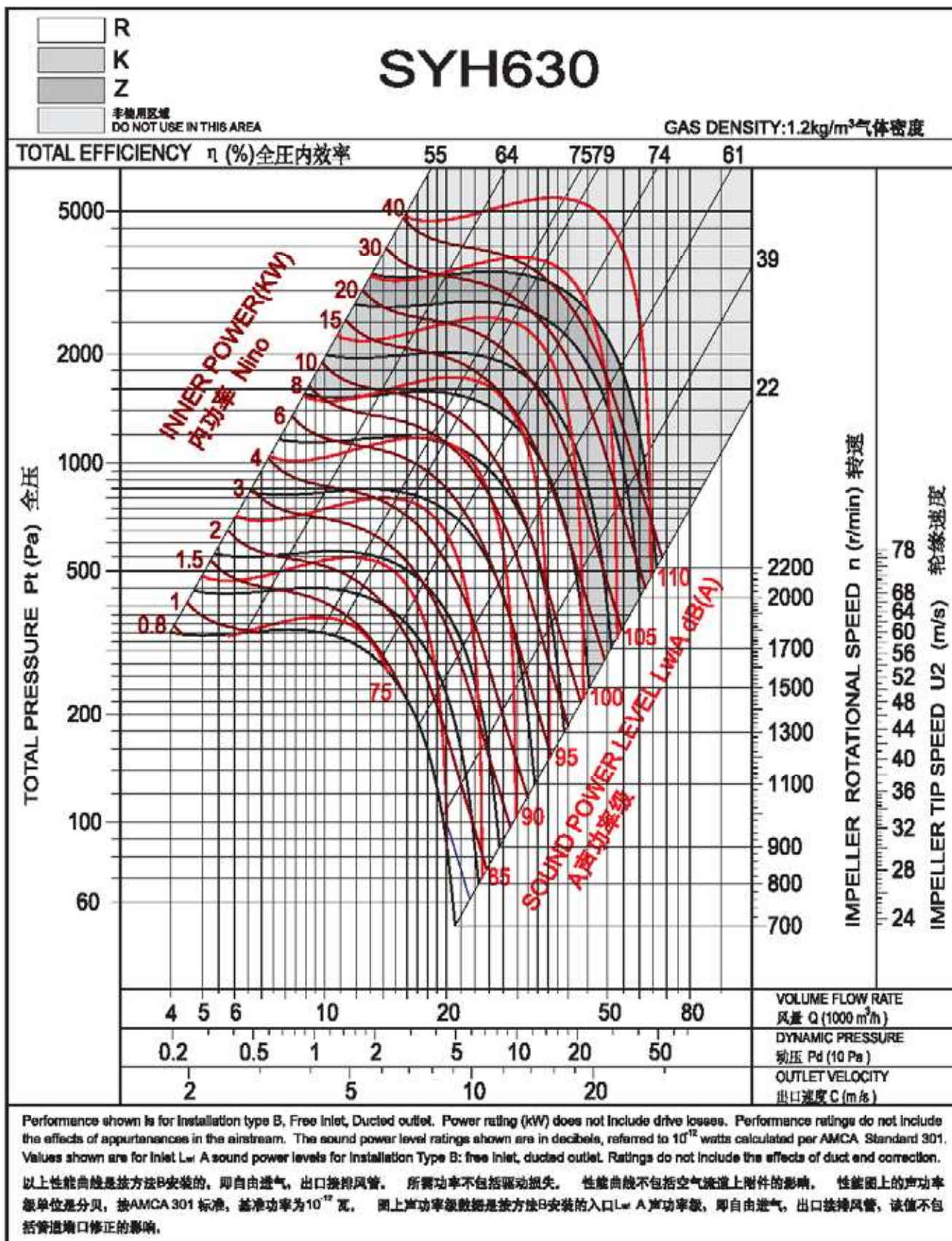


SYH

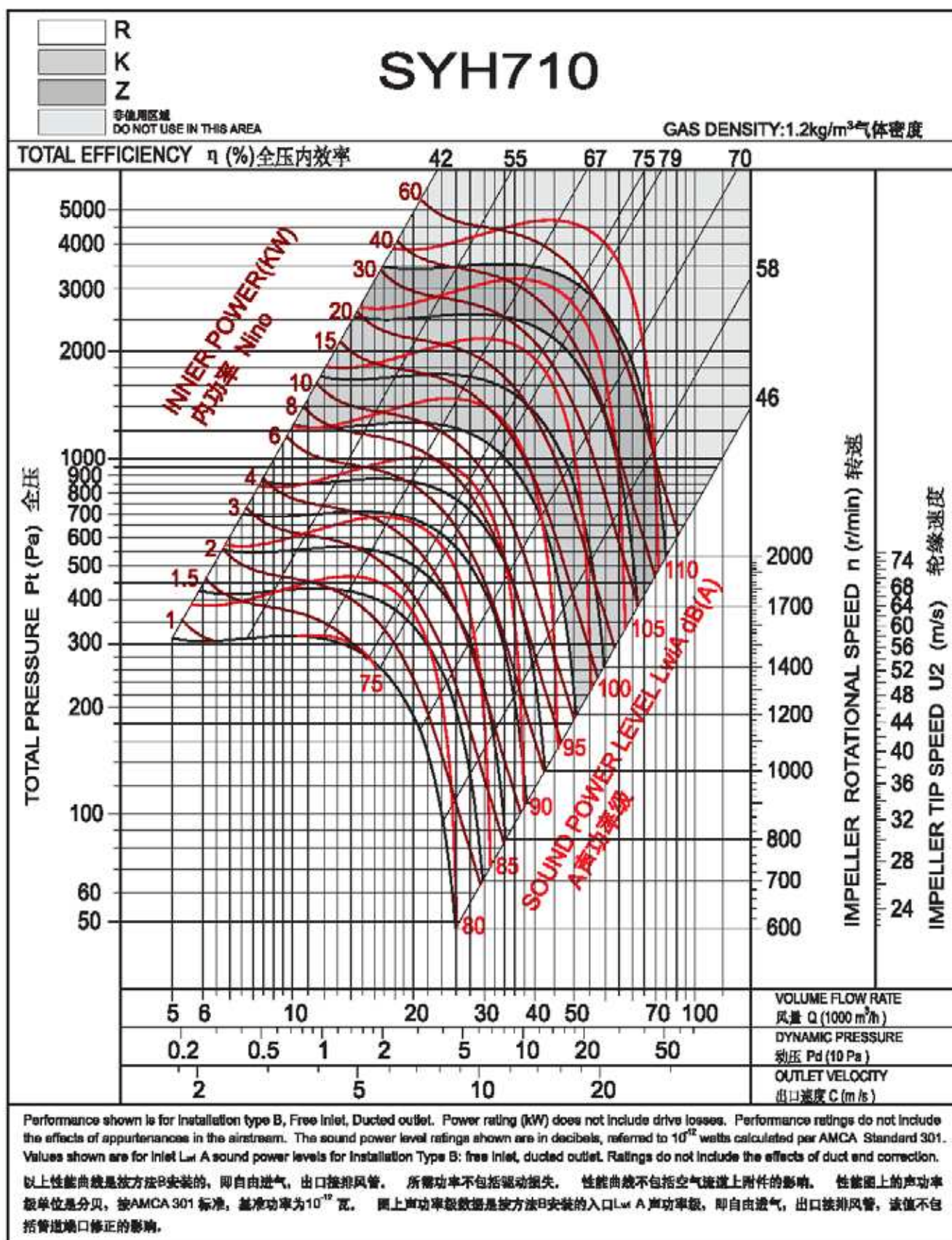


SYH

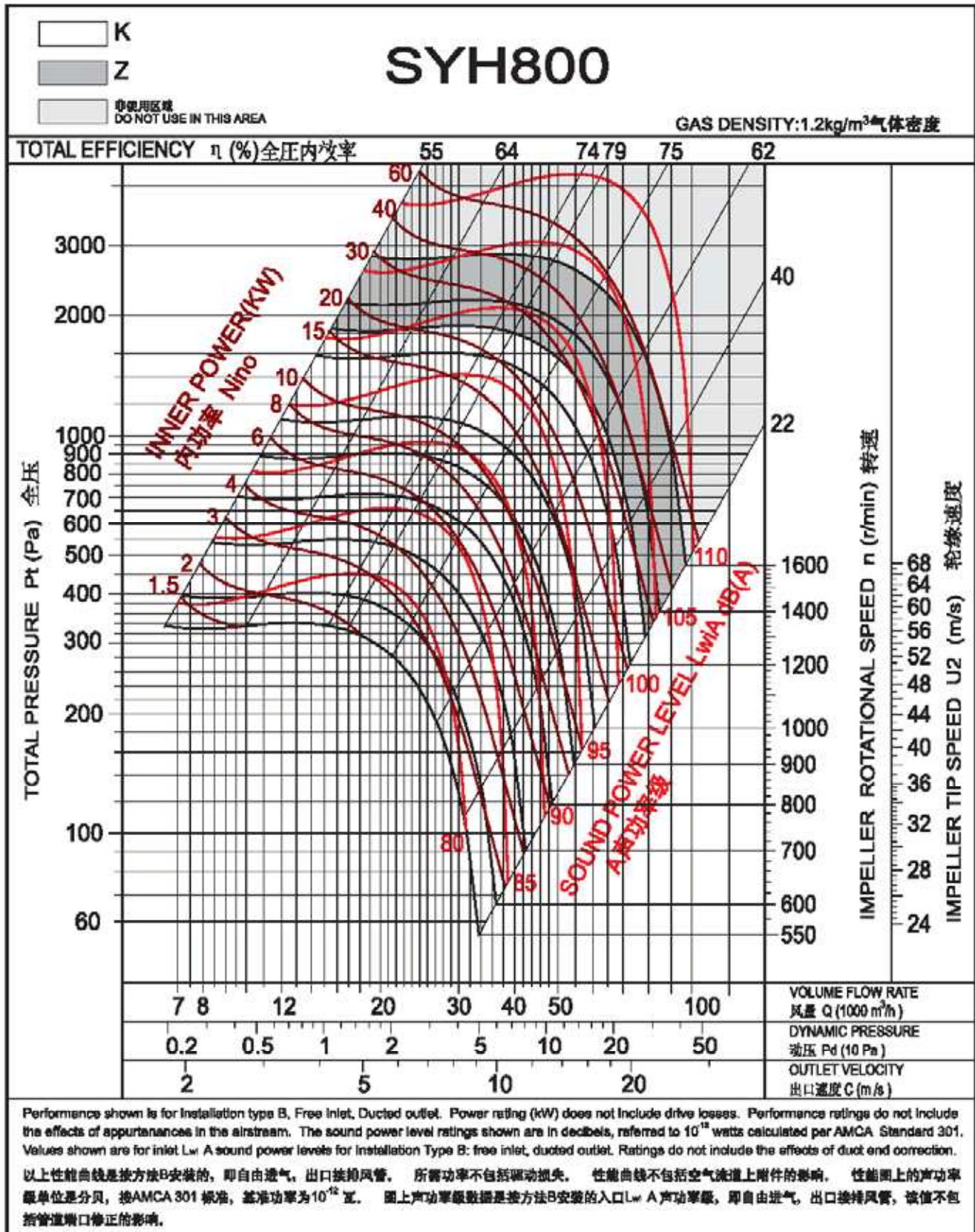


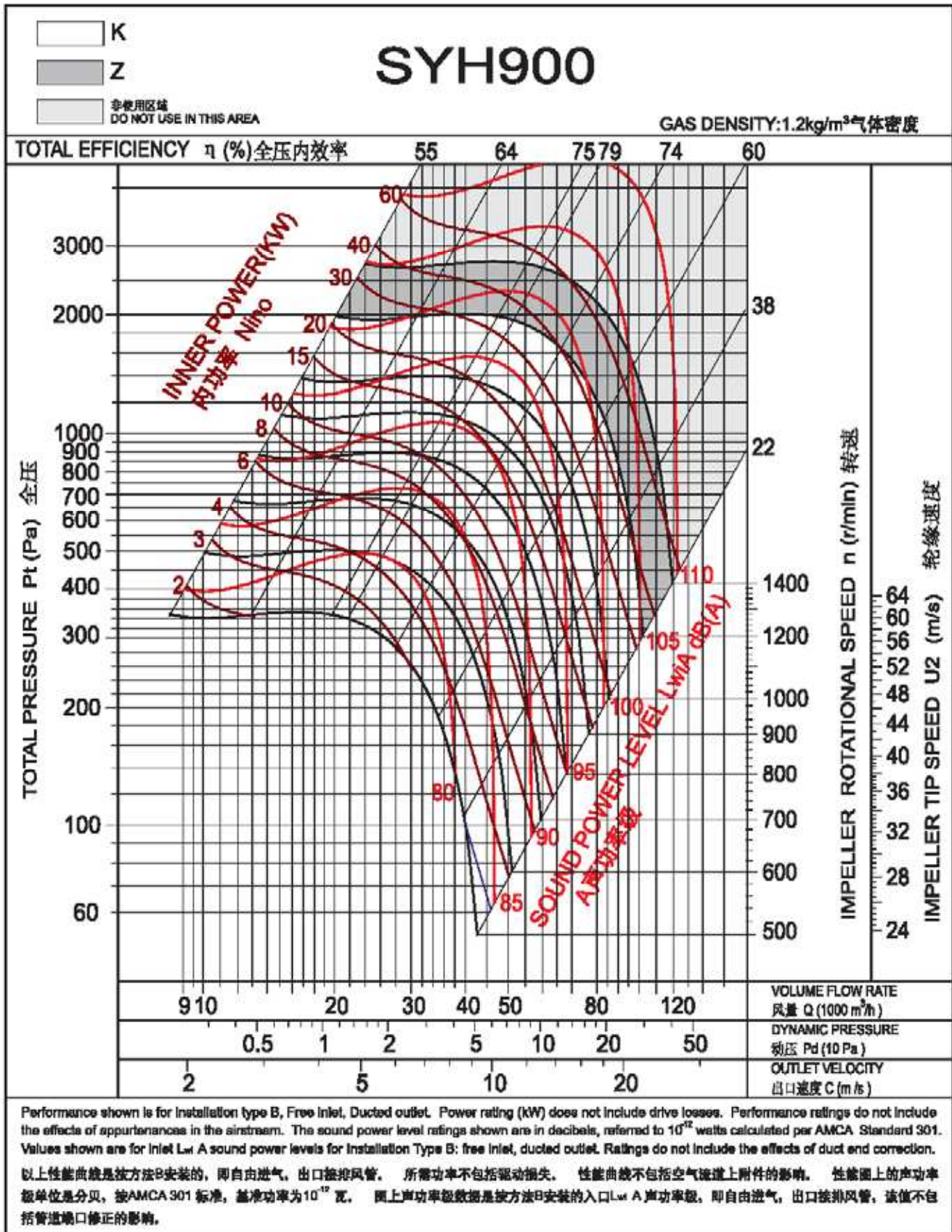


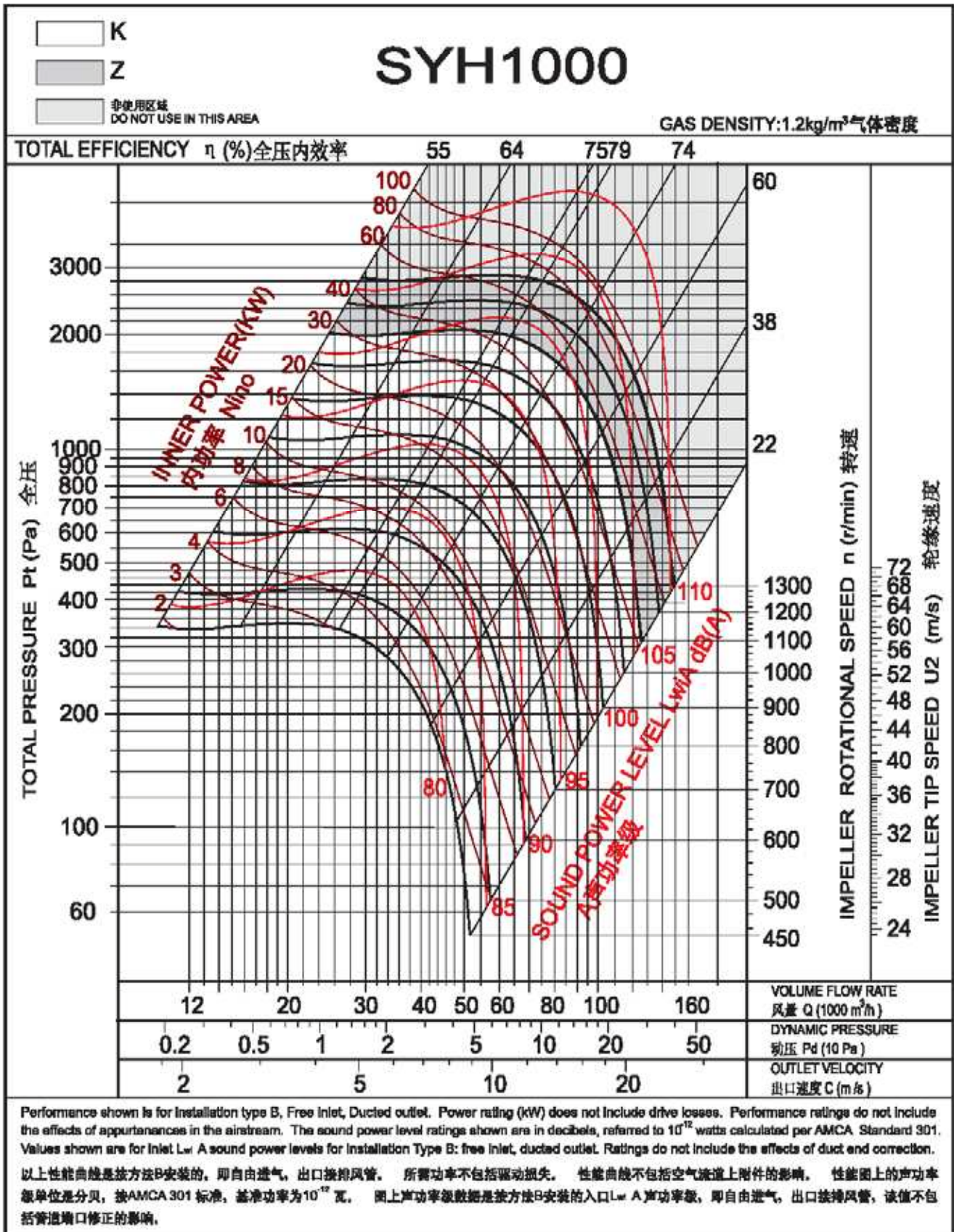
SYH



SYH

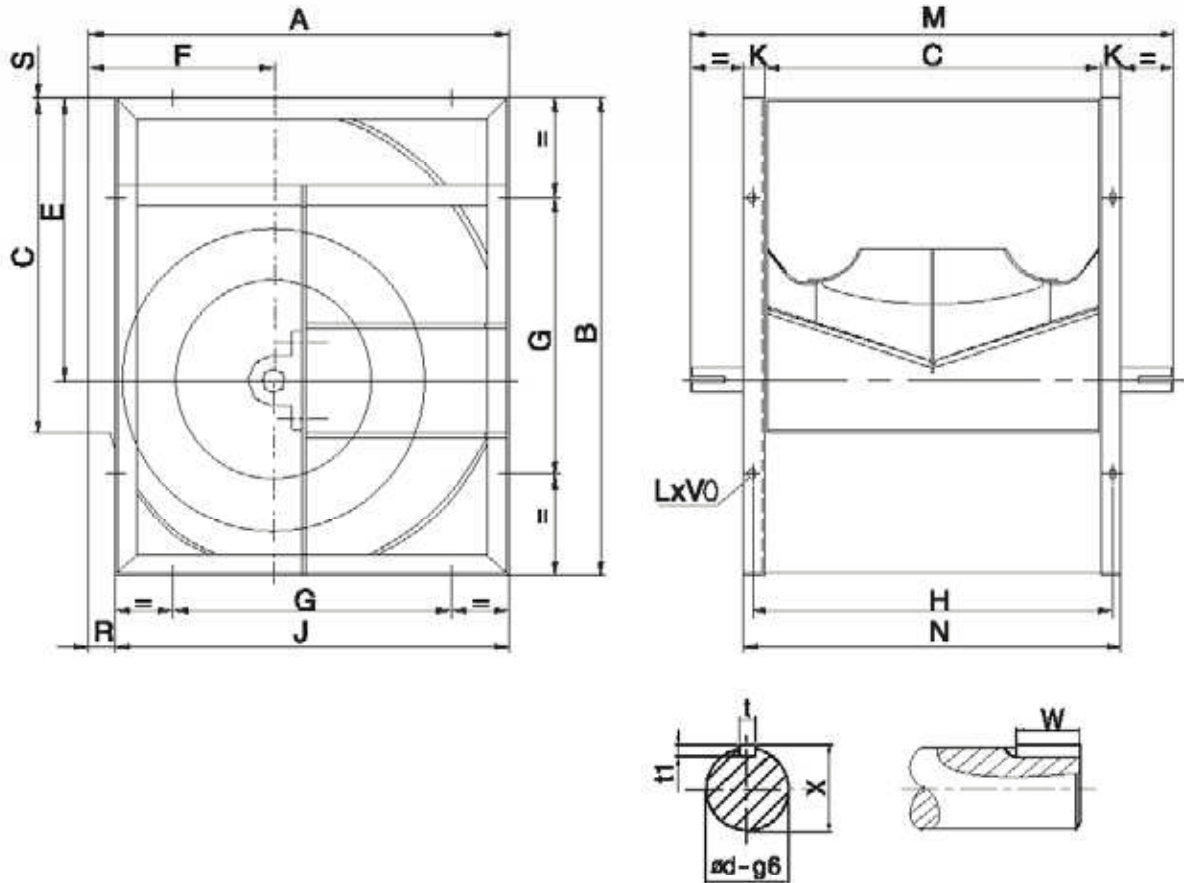






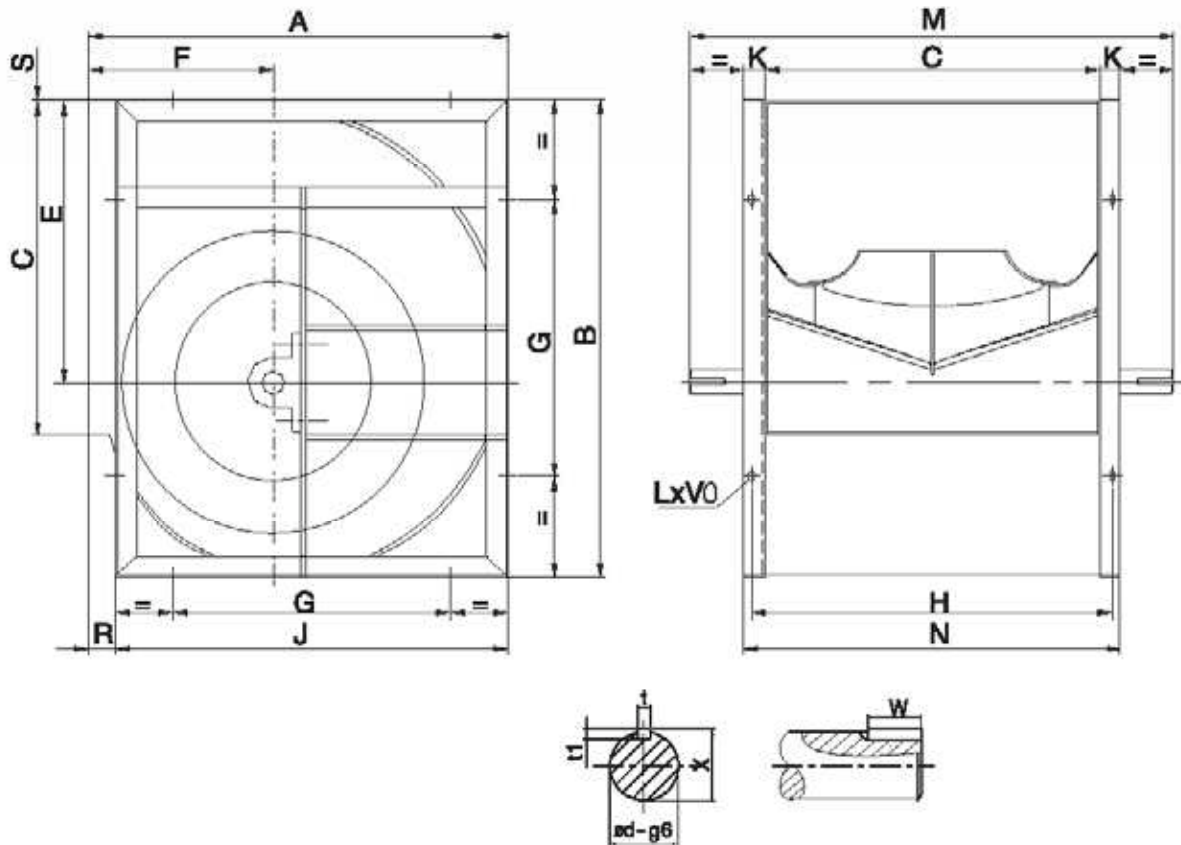
SYH

SYH-R



Model	A	B	C	E	F	G	H	J	K	M	N	R	S	t	t1	W	X	φd	LxV
280	486	518	361	302	215	280	391	432	30	575	421	34	5	8	7	50	28	25	13x18
315	518	578	404	340	238	280	434	480	30	640	464	38	3	8	7	60	28	25	13x18
355	578	655	453	383	261	355	493	548	40	700	533	30	6	8	7	60	33	30	13x18
400	651	736	507	431.5	290	355	547	613	40	780	587	38	4.5	8	7	60	33	30	13x18
450	726	827	569	486	322	530	609	681	40	845	649	45	5	10	8	70	38	35	13x18
500	800	918	638	538	352	530	678	750	40	915	718	50	5	10	8	70	38	35	13x18
560	893	1030	715	602	390	530	765	845	50	1000	815	48	8	12	8	70	43	40	13x18
630	988	1157	801	678.5	434	530	851	946	50	1090	901	53	7	14	9	70	48.5	45	13x18
710	1121	1303	898	765	485	630	948	1058	50	1255	998	63	7	14	9	90	53.5	50	17x22

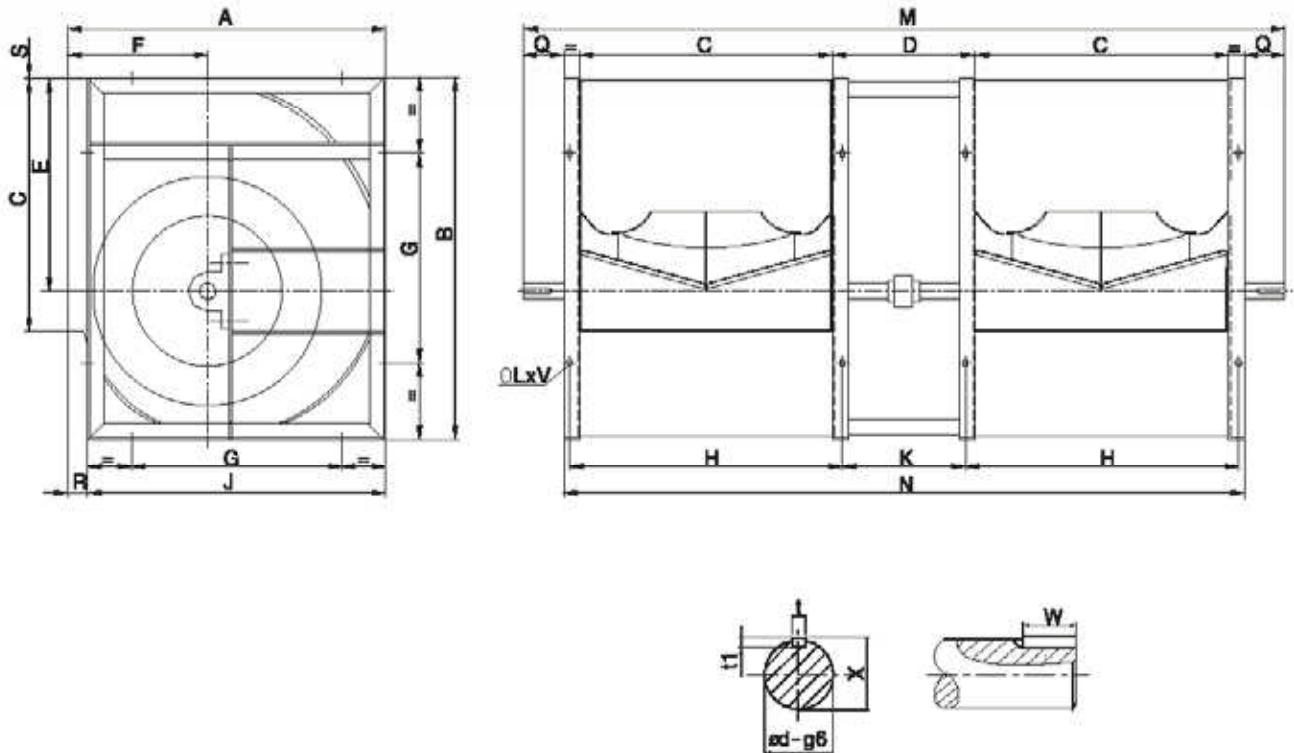
SYH-K(Z)



SYH

Model	A	B	C	E	F	G	H	J	K	M	N	R	S	t	t1	W	X	φd	LxV
280	466	518	361	302	215	280	391	432	30	600	421	34	5	8	7	60	33	30	13x18
315	518	578	404	340	236	280	434	480	30	665	464	38	3	8	7	70	33	30	13x18
355	578	655	453	383	261	355	493	548	40	725	533	30	6	10	8	70	38	35	13x18
400	651	736	507	431.5	290	355	547	613	40	790	587	38	4.5	10	8	70	38	35	13x18
450	726	827	569	486	322	530	609	681	40	890	649	45	4.5	12	8	90	43	40	13x18
500	800	918	638	538	352	530	678	750	40	960	718	50	5	12	8	90	43	40	13x18
560	893	1030	715	603	390	530	765	845	50	1070	815	48	8	14	9	90	53.5	50	13x18
630	999	1157	801	678.5	434	530	851	946	50	1155	901	53	7	14	9	90	53.5	50	13x18
710	1121	1303	898	765	485	830	948	1058	50	1290	998	63	7	18	11	90	64	60	17x22
800	1250	1468	1007	862	535	710	1057	1181	50	1450	1107	69	7	18	11	90	64	60	17x22
800	1408	1648	1130	971	604	800	1180	1318	60	1570	1250	89	7	18	11	100	69	65	17x22
1000	1541	1810	1267	1066	657	800	1317	1462	60	1700	1387	79	9	18	11	100	69	65	17x22

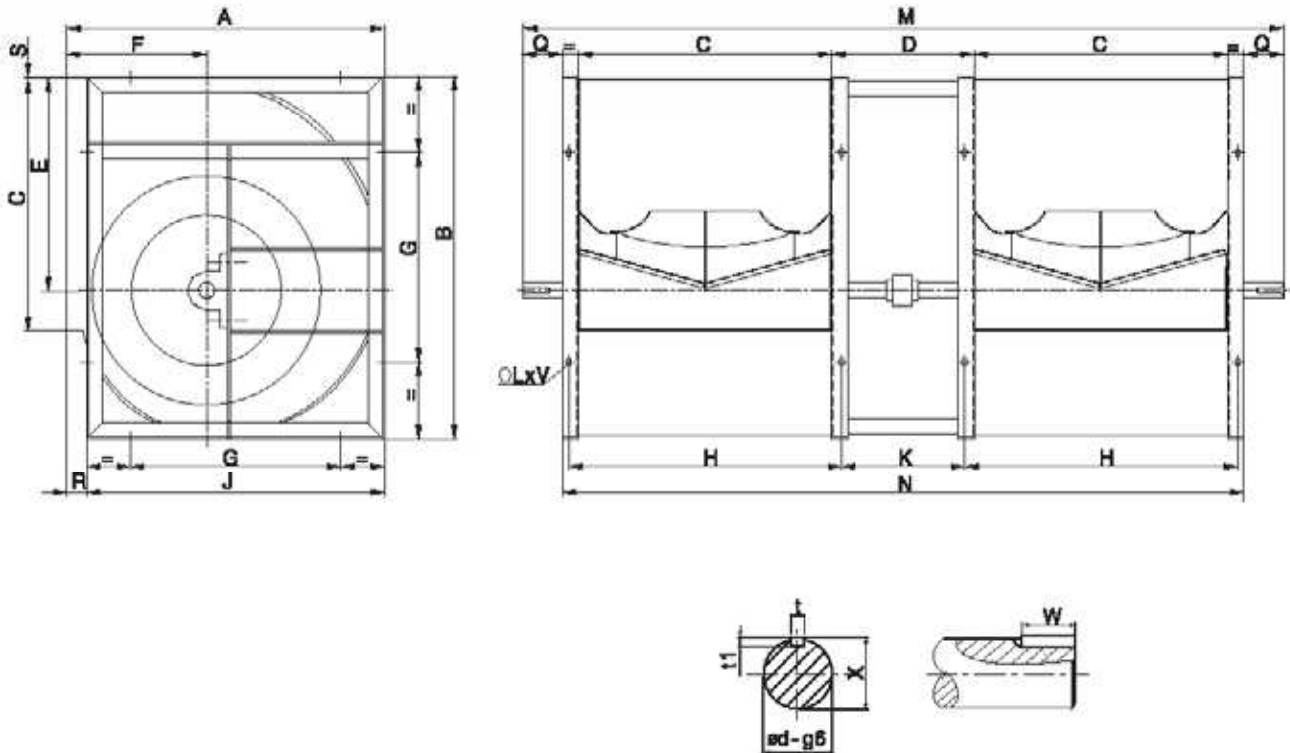
SYH-R2



SYH

Model	A	B	C	D	E	F	G	H	J	K	M	N	Q	R	S	t	t1	W	X	φd	LxV
280	466	518	361	280	302	214	280	391	432	250	1216	1060	77	34	5	8	7	50	28	25	13x18
315	518	578	404	315	340	236	280	434	480	285	1359	1183	88	38	3	8	7	60	28	25	13x18
355	578	654	453	355	383	260	355	493	548	315	1508	1338	83.5	30	6	8	7	60	33	30	13x18
400	650	736	507	400	432	290	355	547	612	360	1667	1492	86.5	38	4.5	8	7	60	33	30	13x18
450	726	827	569	450	486	322	530	609	681	410	1864	1666	88	45	5	10	8	70	38	35	13x18
500	800	918	638	500	538	352	530	678	750	460	2053	1856	98.5	50	5	10	8	70	38	35	13x18
560	893	1030	715	560	602	390	530	765	845	510	2275	2090	92.5	48	8	12	8	70	43	40	13x18
630	999	1157	801	630	678.5	434	530	851	946	580	2521	2332	94.5	53	7	14	9	70	48.5	45	13x18
710	1121	1303	898	710	765	485	630	948	1058	660	2863	2606	128.5	63	7	14	9	80	53.5	50	17x22

SYH-K2

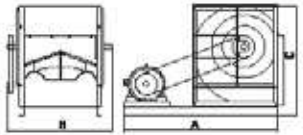
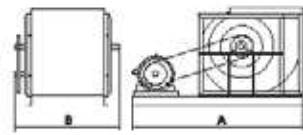
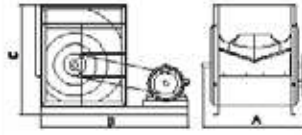
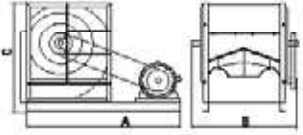
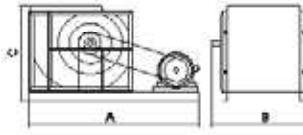
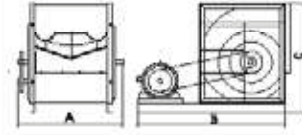


Model	A	B	C	D	E	F	G	H	J	K	M	N	Q	R	S	t	t1	W	X	φd	LxV
355	578	654	453	355	383	260	355	493	548	315	1533	1339	96	30	6	10	8	70	38	35	13x18
400	650	736	507	400	432	290	355	547	612	360	1697	1492	99	38	4.5	10	8	70	38	35	13x18
450	726	827	568	450	486	322	530	609	681	410	1909	1666	120.5	45	5	12	8	90	43	40	13x18
500	800	918	638	500	538	352	530	678	750	460	2098	1858	121	50	5	12	8	90	43	40	13x18
560	893	1030	715	560	602	390	530	785	845	510	2345	2090	127.5	48	8	14	9	90	53.5	50	13x18
630	999	1157	801	630	678.5	434	530	851	946	580	2586	2332	127	53	7	14	9	90	53.5	50	13x18
710	1121	1303	898	710	765	485	630	948	1058	660	2898	2606	146	63	7	14	9	90	64	60	17x22
800	1250	1488	1007	800	882	535	710	1057	1181	750	3257	2914	171.5	69	7	18	11	90	64	60	17x22
900	1408	1648	1130	900	971	604	800	1180	1319	850	3600	3280	160	89	7	18	11	100	69	65	17x22
1000	1541	1810	1267	1000	1066	657	900	1317	1462	950	3967	3654	156.5	79	7	18	11	100	69	65	17x22

SYH-R(K)

		0°				90°				180°			
		左旋LG		右旋RD		左旋LG		右旋RD		左旋LG		右旋RD	
		A		B		A		B		A		B	
型号 Model	电机 机座号 Motor Frame Size	A	R型	K型	C	A	R型	K型	C	A	R型	K型	C
280	71	730	575	600	568	820	575	600	516	730	575	600	568
	80	750	575	600	568	840	575	600	516	750	575	600	568
	90	760	575	600	568	850	575	600	516	760	575	600	568
	100	810	575	600	568	890	575	600	516	810	575	600	568
	112	850	575	600	568	930	575	600	516	850	575	600	568
	132	850	575	600	568	930	575	600	516	850	575	600	568
315	160	900	575	600	568	980	575	600	516	900	575	600	568
	71	790	640	665	628	900	640	665	568	790	640	665	628
	80	810	640	665	628	910	640	665	568	810	640	665	628
	90	830	640	665	628	930	640	665	568	830	640	665	628
	100	870	640	665	628	980	640	665	568	870	640	665	628
	112	925	640	665	628	1000	640	665	568	925	640	665	628
355	132	930	640	665	628	1030	640	665	568	930	640	665	628
	160	980	640	665	628	1080	640	665	568	980	640	665	628
	80	870	700	725	705	970	700	725	628	870	700	725	705
	90	890	700	725	705	990	700	725	628	890	700	725	705
	100	930	700	725	705	1030	700	725	628	930	700	725	705
	112	990	700	725	705	1090	700	725	628	990	700	725	705
400	132	1020	700	725	705	1110	700	725	628	1020	700	725	705
	180	1070	700	725	705	1160	700	725	628	1070	700	725	705
	180	1120	700	725	705	1200	700	725	628	1120	700	725	705
	90	980	760	790	786	1100	760	790	701	980	760	790	786
	100	1020	760	790	786	1140	760	790	701	1020	760	790	786
	112	1060	760	790	786	1190	760	790	701	1060	760	790	786
450	132	1080	760	790	786	1210	760	790	701	1080	760	790	786
	160	1120	760	790	786	1240	760	790	701	1120	760	790	786
	180	1160	760	790	786	1300	760	790	701	1160	760	790	786
	90	1050	845	890	877	1200	845	890	776	1050	845	890	877
	100	1100	845	890	877	1250	845	890	776	1100	845	890	877
	112	1150	845	890	877	1300	845	890	776	1150	845	890	877
500	132	1220	845	890	877	1330	845	890	776	1220	845	890	877
	160	1270	845	890	877	1370	845	890	776	1270	845	890	877
	180	1310	845	890	877	1410	845	890	776	1310	845	890	877
	200	1350	845	890	877	1450	845	890	776	1350	845	890	877
	90	1100	915	960	981	1280	915	960	863	1100	915	960	981
	100	1120	915	960	981	1120	915	960	863	1120	915	960	981
500	112	1170	915	960	981	1340	915	960	863	1170	915	960	981
	132	1210	915	960	981	1385	915	960	863	1210	915	960	981
	160	1260	915	960	981	1430	915	960	863	1260	915	960	981
	180	1300	915	960	981	1470	915	960	863	1300	915	960	981
200	1350	915	960	981	1520	915	960	863	1350	915	960	981	

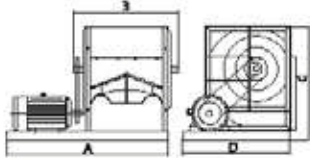
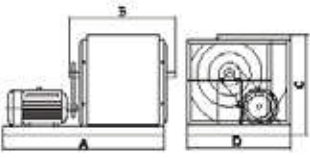
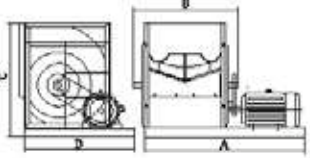
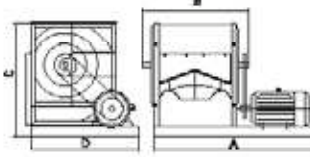
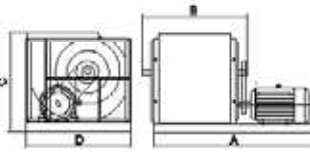
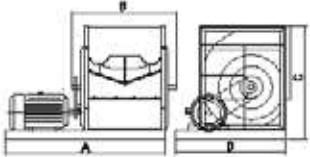
SYH-R(K)

		0°				90°				180°			
													
													
型号 Model	电机 机座型号 Motor Frame Size	A	B		C	A	B		C	A	B		C
			R型	K型			R型	K型			R型	K型	
560	90	1220	1000	1070	1093	1410	1000	1070	956	1220	1000	1070	1093
	100	1260	1000	1070	1093	1450	1000	1070	956	1260	1000	1070	1093
	112	1300	1000	1070	1093	1490	1000	1070	956	1300	1000	1070	1093
	132	1310	1000	1070	1093	1500	1000	1070	956	1310	1000	1070	1093
	160	1380	1000	1070	1093	1580	1000	1070	956	1380	1000	1070	1093
	180	1390	1000	1070	1093	1580	1000	1070	956	1390	1000	1070	1093
	200	1440	1000	1070	1093	1630	1000	1070	956	1440	1000	1070	1093
630	100	1400	1090	1155	1220	1610	1090	1155	1062	1400	1090	1155	1220
	112	1430	1090	1155	1220	1640	1090	1155	1062	1430	1090	1155	1220
	132	1450	1090	1155	1220	1660	1090	1155	1062	1450	1090	1155	1220
	160	1500	1090	1155	1220	1710	1090	1155	1062	1500	1090	1155	1220
	180	1520	1090	1155	1220	1730	1090	1155	1062	1520	1090	1155	1220
	200	1570	1090	1155	1220	1780	1090	1155	1062	1570	1090	1155	1220
710	112	1600	1255	1290	1383	1850	1255	1290	1201	1600	1255	1290	1383
	132	1650	1255	1290	1383	1900	1255	1290	1201	1650	1255	1290	1383
	160	1700	1255	1290	1383	1950	1255	1290	1201	1700	1255	1290	1383
	180	1750	1255	1290	1383	2000	1255	1290	1201	1750	1255	1290	1383
	200	1770	1255	1290	1383	2020	1255	1290	1201	1770	1255	1290	1383
	225	1800	1255	1290	1383	2050	1255	1290	1201	1800	1255	1290	1383
800	132	1710	\	1450	1548	1950	\	1450	1330	1710	\	1450	1548
	160	1750	\	1450	1548	2040	\	1450	1330	1750	\	1450	1548
	180	1770	\	1450	1548	2060	\	1450	1330	1770	\	1450	1548
	200	1820	\	1450	1548	2110	\	1450	1330	1820	\	1450	1548
	225	1850	\	1450	1548	2140	\	1450	1330	1850	\	1450	1548
	250	1900	\	1450	1548	2190	\	1450	1330	1900	\	1450	1548
900	132	1860	\	1570	1748	2210	\	1570	1508	1860	\	1570	1748
	160	1900	\	1570	1748	2250	\	1570	1508	1900	\	1570	1748
	180	1950	\	1570	1748	2300	\	1570	1508	1950	\	1570	1748
	200	2000	\	1570	1748	2350	\	1570	1508	2000	\	1570	1748
	225	2030	\	1570	1748	2380	\	1570	1508	2030	\	1570	1748
	250	2080	\	1570	1748	2430	\	1570	1508	2080	\	1570	1748
	280	2150	\	1570	1748	2500	\	1570	1508	2150	\	1570	1748
1000	132	2110	\	1700	1910	2410	\	1700	1641	2110	\	1700	1910
	160	2150	\	1700	1910	2450	\	1700	1641	2150	\	1700	1910
	180	2200	\	1700	1910	2500	\	1700	1641	2200	\	1700	1910
	200	2200	\	1700	1910	2500	\	1700	1641	2200	\	1700	1910
	225	2250	\	1700	1910	2650	\	1700	1641	2250	\	1700	1910
	250	2330	\	1700	1910	2630	\	1700	1641	2330	\	1700	1910
	280	2400	\	1700	1910	2700	\	1700	1641	2400	\	1700	1910

SYH-R(K)

		0°					90°					180°					
		左旋LG		右旋RD		左旋LG		右旋RD		左旋LG		右旋RD		左旋LG		右旋RD	
型号 Model	电机 机座型号 Motor Frame Size	A	B		C	D	A	B		C	D	A	B		C	D	
			R型	K型				R型	K型				R型	K型			
280	71	750	575	600	568	612	750	575	600	516	612	750	575	600	568	612	
	80	770	575	600	568	612	770	575	600	516	612	770	575	600	568	612	
	90	810	575	600	568	612	810	575	600	516	612	810	575	600	568	612	
	100	870	575	600	568	612	870	575	600	516	612	870	575	600	568	612	
	112	890	575	600	568	612	890	575	600	516	612	890	575	600	568	612	
	132	990	575	600	568	612	990	575	600	516	612	990	575	600	568	612	
	160	1150	575	600	568	612	1030	575	600	516	612	1030	575	600	568	612	
315	71	790	640	665	628	617	790	640	665	568	617	790	640	665	628	617	
	80	810	640	665	628	617	810	640	665	568	617	810	640	665	628	617	
	90	860	640	665	628	617	860	640	665	568	617	860	640	665	628	617	
	100	910	640	665	628	617	910	640	665	568	617	910	640	665	628	617	
	112	930	640	665	628	617	930	640	665	568	617	930	640	665	628	617	
	132	1030	640	665	628	617	1030	640	665	568	617	1030	640	665	628	617	
	160	1190	640	665	628	617	1070	640	665	568	617	1070	640	665	628	617	
355	71	850	700	725	705	655	850	700	725	628	655	850	700	725	705	655	
	80	870	700	725	705	655	870	700	725	628	655	870	700	725	705	655	
	90	920	700	725	705	655	920	700	725	628	655	920	700	725	705	655	
	100	970	700	725	705	655	970	700	725	628	655	970	700	725	705	655	
	112	990	700	725	705	655	990	700	725	628	655	990	700	725	705	655	
	132	1090	700	725	705	655	1090	700	725	628	655	1090	700	725	705	655	
	160	1250	700	725	705	655	1130	700	725	628	655	1130	700	725	705	655	
400	80	960	760	790	786	736	960	760	790	613	736	960	760	790	786	736	
	90	1000	760	790	786	736	1000	760	790	613	736	1000	760	790	786	736	
	100	1050	760	790	786	736	1050	760	790	613	736	1050	760	790	786	736	
	112	1070	760	790	786	736	1070	760	790	613	736	1070	760	790	786	736	
	132	1170	760	790	786	736	1170	760	790	613	736	1170	760	790	786	736	
	160	1300	760	790	786	736	1300	760	790	613	736	1300	760	790	786	736	
	180	1380	760	790	786	736	1380	760	790	613	736	1380	760	790	786	736	
450	90	1050	845	890	877	827	1050	845	890	776	827	1050	845	890	877	827	
	100	1100	845	890	877	827	1100	845	890	776	827	1100	845	890	877	827	
	112	1120	845	890	877	827	1120	845	890	776	827	1120	845	890	877	827	
	132	1220	845	890	877	827	1220	845	890	776	827	1220	845	890	877	827	
	160	1300	845	890	877	827	1300	845	890	776	827	1300	845	890	877	827	
	180	1380	845	890	877	827	1380	845	890	776	827	1380	845	890	877	827	
	200	1440	845	890	877	827	1440	845	890	776	827	1440	845	890	877	827	
500	90	1130	915	960	981	918	1130	915	960	863	918	1130	915	960	981	918	
	100	1150	915	960	981	918	1150	915	960	863	918	1150	915	960	981	918	
	112	1190	915	960	981	918	1190	915	960	863	918	1190	915	960	981	918	
	132	1290	915	960	981	918	1290	915	960	863	918	1290	915	960	981	918	
	160	1430	915	960	981	918	1430	915	960	863	918	1430	915	960	981	918	
	180	1500	915	960	981	918	1500	915	960	863	918	1500	915	960	981	918	
	200	1560	915	960	981	918	1560	915	960	863	918	1560	915	960	981	918	

SYH-R(K)

		0°					90°					180°				
																
																
型号 Model	电机 机座型号 Motor Frame Size	A	B		C	D	A	B		C	D	A	B		C	D
			R型	K型				R型	K型				R型	K型		
660	90	1250	1000	1070	1093	1030	1250	1000	1070	956	1030	1250	1000	1070	1093	1030
	100	1290	1000	1070	1093	1030	1290	1000	1070	956	1030	1290	1000	1070	1093	1030
	112	1300	1000	1070	1093	1030	1300	1000	1070	956	1030	1300	1000	1070	1093	1030
	132	1400	1000	1070	1093	1030	1400	1000	1070	956	1030	1400	1000	1070	1093	1030
	160	1550	1000	1070	1093	1030	1550	1000	1070	956	1030	1550	1000	1070	1093	1030
	180	1600	1000	1070	1093	1030	1600	1000	1070	956	1030	1600	1000	1070	1093	1030
630	200	1660	1000	1070	1093	1030	1660	1000	1070	956	1030	1660	1000	1070	1093	1030
	90	1340	1090	1155	1220	1157	1340	1090	1155	1062	1157	1340	1090	1155	1220	1157
	100	1380	1090	1155	1220	1157	1380	1090	1155	1062	1157	1380	1090	1155	1220	1157
	112	1400	1090	1155	1220	1157	1400	1090	1155	1062	1157	1400	1090	1155	1220	1157
	132	1480	1090	1155	1220	1157	1480	1090	1155	1062	1157	1480	1090	1155	1220	1157
	160	1620	1090	1155	1220	1157	1620	1090	1155	1062	1157	1620	1090	1155	1220	1157
710	180	1680	1090	1155	1220	1157	1680	1090	1155	1062	1157	1680	1090	1155	1220	1157
	200	1740	1090	1155	1220	1157	1740	1090	1155	1062	1157	1740	1090	1155	1220	1157
	100	1480	1255	1290	1383	1303	1480	1255	1290	1508	1303	1480	1255	1290	1383	1303
	112	1500	1255	1290	1383	1303	1500	1255	1290	1508	1303	1500	1255	1290	1383	1303
	132	1600	1255	1290	1383	1303	1600	1255	1290	1508	1303	1600	1255	1290	1383	1303
	160	1730	1255	1290	1383	1303	1730	1255	1290	1508	1303	1730	1255	1290	1383	1303
800	180	1800	1255	1290	1383	1303	1800	1255	1290	1508	1303	1800	1255	1290	1383	1303
	200	1850	1255	1290	1383	1303	1850	1255	1290	1508	1303	1850	1255	1290	1383	1303
	225	1920	1255	1290	1383	1303	1920	1255	1290	1508	1303	1920	1255	1290	1383	1303
	100	1650	\	1450	1548	1468	1650	\	1450	1330	1468	1650	\	1450	1548	1468
	112	1650	\	1450	1548	1468	1650	\	1450	1330	1468	1650	\	1450	1548	1468
	132	1720	\	1450	1548	1468	1720	\	1450	1330	1468	1720	\	1450	1548	1468
900	160	1880	\	1450	1548	1468	1880	\	1450	1330	1468	1880	\	1450	1548	1468
	180	1950	\	1450	1548	1468	1950	\	1450	1330	1468	1950	\	1450	1548	1468
	200	2000	\	1450	1548	1468	2000	\	1450	1330	1468	2000	\	1450	1548	1468
	225	2050	\	1450	1548	1468	2050	\	1450	1330	1468	2050	\	1450	1548	1468
	132	1860	\	1570	1748	1648	1860	\	1570	1748	1648	1860	\	1570	1748	1648
	160	1960	\	1570	1748	1648	1960	\	1570	1748	1648	1960	\	1570	1748	1648
1000	180	2030	\	1570	1748	1648	2030	\	1570	1748	1648	2030	\	1570	1748	1648
	200	2100	\	1570	1748	1648	2100	\	1570	1748	1648	2100	\	1570	1748	1648
	225	2170	\	1570	1748	1648	2170	\	1570	1748	1648	2170	\	1570	1748	1648
	250	2270	\	1570	1748	1648	2270	\	1570	1748	1648	2270	\	1570	1748	1648
	280	2370	\	1570	1748	1648	2370	\	1570	1748	1648	2370	\	1570	1748	1648
	132	1990	\	1700	1910	1810	1990	\	1700	1641	1810	1990	\	1700	1910	1810
160	2110	\	1700	1910	1810	2110	\	1700	1641	1810	2110	\	1700	1910	1810	
180	2160	\	1700	1910	1810	2160	\	1700	1641	1810	2160	\	1700	1910	1810	
200	2230	\	1700	1910	1810	2230	\	1700	1641	1810	2230	\	1700	1910	1810	
225	2300	\	1700	1910	1810	2300	\	1700	1641	1810	2300	\	1700	1910	1810	
250	2390	\	1700	1910	1810	2390	\	1700	1641	1810	2390	\	1700	1910	1810	
280	2500	\	1700	1910	1810	2500	\	1700	1641	1810	2500	\	1700	1910	1810	

SYH系列风机运行极限
SYH Series Ventilator Operational Limits

			280	315	355	400	450	500	560	630	710	800	900	1000
极限吸收功率 Max. absorbed Power	R	KW	5.5	4.8	5.5	6.0	8.0	12	14	20	20	/	/	/
	K	KW	8	8	15	15	15	22	30	35	40	30	43	55
	Z	KW	/	/	/	/	/	30	38.5	40	60	65	65	80
	R2	KW	5.5	6.5	8.5	8.5	12	13	14	18	18	/	/	/
	K2	KW	/	/	13	13	18.5	22	32	34	45	45	45	65
极限转速 Max.R.P.M	R	rpm	4000	3200	2800	2400	2200	2000	1800	1700	1400	/	/	/
	K	rpm	4500	4000	3800	3200	2800	2500	2300	2000	1700	1300	1200	1100
	Z	rpm	/	/	/	/	/	2800	2500	2200	2000	1600	1400	1300
	R2	rpm	3200	2800	2600	2100	1800	1600	1400	1200	1000	/	/	/
	K2	rpm	/	/	3000	2400	2200	2000	1800	1600	1400	1200	1000	900
极限温度(最低-20℃) Air Temperature Limits (Min-20℃)	R/R2	Max.℃	85	85	85	85	85	85	85	85	85	/	/	/
	K/K2	Max.℃	85	85	85	85	85	85	85	85	85	85	85	85
	Z	Max.℃	/	/	/	/	/	85	85	85	85	85	85	85
风机重量 Fan Weight	R	Kg	22	32.6	42.7	50.6	67.5	84.2	142	168	223	/	/	/
	K	Kg	32	42.6	54.7	63.6	82.5	104.2	171	197	271	300	481.5	530
	Z	Kg	/	/	/	/	/	107	174	200	274	304	485	535
	R2	Kg	46	67	91	107	143	176	300	352	462	/	/	/
	K2	Kg	/	/	111	127	173	217	358	410	558	616	989	1086

本样本中所述的风机特性,如尺寸、性能参数等,本公司保留更改的权利,恕不另行通知,如有不确之处,请来电咨询。
 The data such as performance, dimension and etc. in this catalogue is subject to change without notice, please contact with the manufacturer for further information.